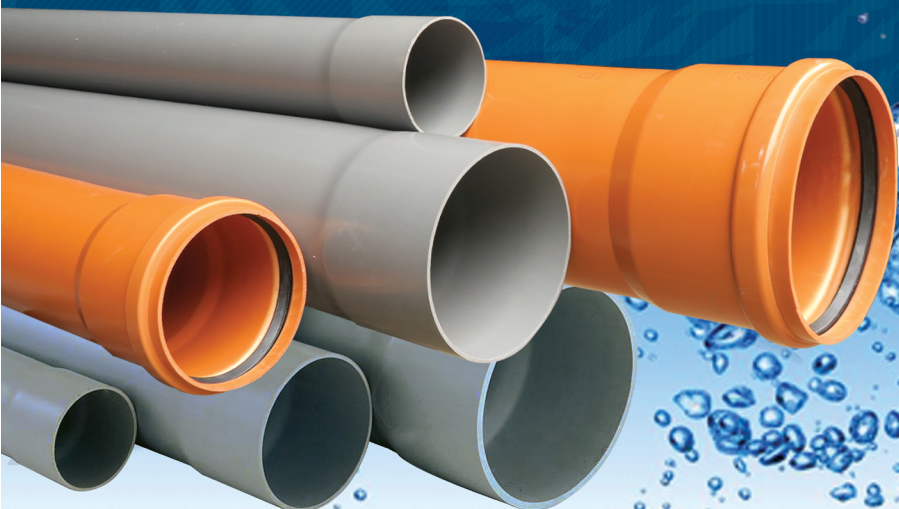
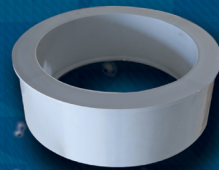




PVC -U PIPES & FITTINGS

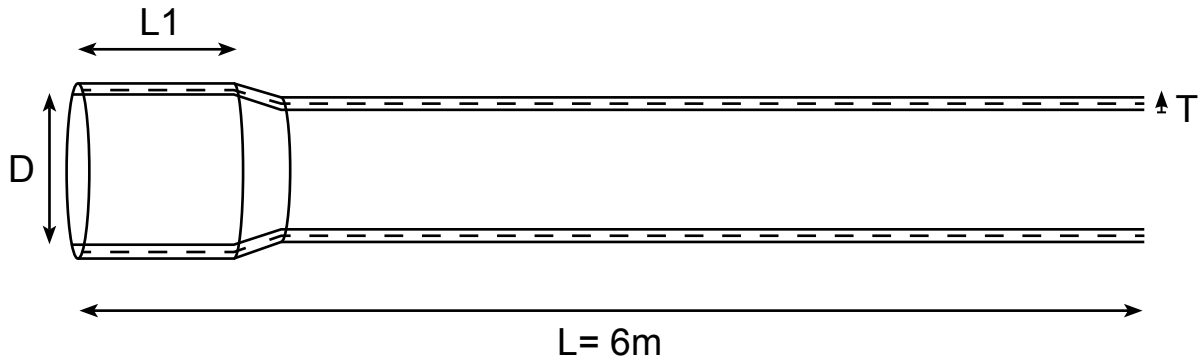
Soil, Vent, Waste & Sewer Systems



ISO 9001
BUREAU VERITAS
Certification



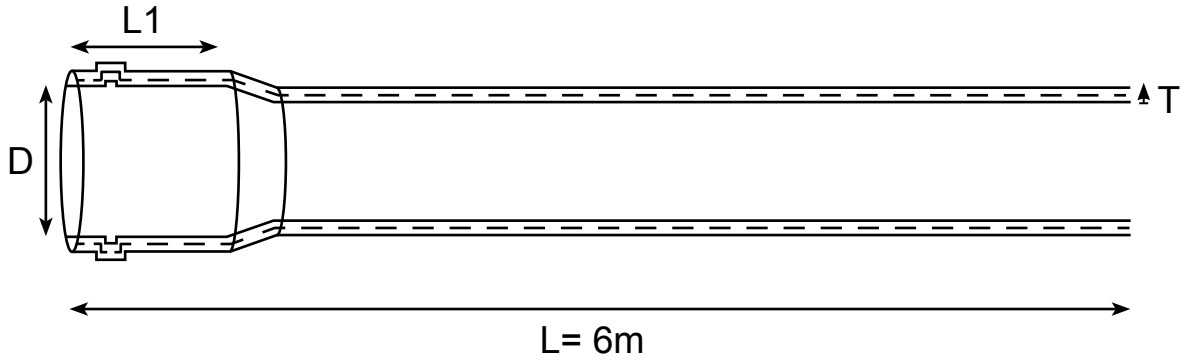
Drainage Pipes



<i>Nominal Diameter Dn</i>	<i>Outside Diameter D(mm)</i>	<i>Wall Thickness T(mm)</i>	<i>Socket Depth L1(mm)</i>
1/2	21,1	2,0	NA
3/4	26,6	2,0	NA
1	33,4	2,0	NA
1 1/4	42,1	2,2	NA
1 1/2	48	2,5	NA
50	50	3,0	65
2	60	2,5	70
2	60	4,0	NA
3	75	2,5	75
3	75	4,0	NA
*4	100	1,8	80
4	100	2,5	80
4	100	3,0	80
4	100	4,0	NA
*4	110	3,2	90
5	125	3,0	90
*5	125	4,0	NA
6	160	3,0	100
*6	160	4,0	NA
8	200	3,2	120
*10	250	4,9	150

* Upon request

Sewer Pipes

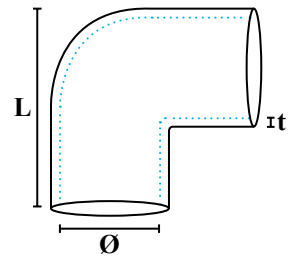


	<i>Grey</i>		<i>Orange Brown</i>				
	<i>EN 1329-1</i>	<i>EN 1329-1</i>	<i>EN 1401-1</i>				
	75	75	110	125	160	200	250
Thickness	3,0	3,0	3,2	3,2	4,0	4,9	6,2
Ring Stiffness	SN4	SN4	SN8	SN4	SN4	SN4	SN4

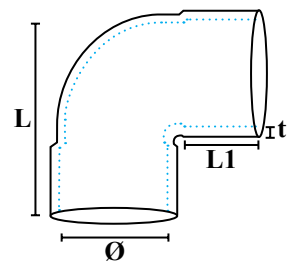
*	<i>Grey</i>		<i>Orange Brown</i>				
	<i>EN 1329-1</i>	<i>EN 1329-1</i>	<i>EN 1401-1</i>				
	75	75	110	125	160	200	250
Thickness	2,5	2,5	2,5	2,8	3,0	4,0	4,9
Ring Stiffness	SN2	SN2	SN2	SN2	SN2	SN2	SN2

* Upon request

Drainage Fittings

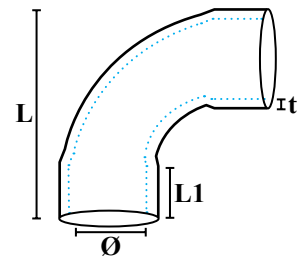


Reference	\varnothing (mm)	t(mm)	L(mm)	Notes
B1/2ff	21,1	2,5	46	
B3/4ff	26,6	2,5	58	



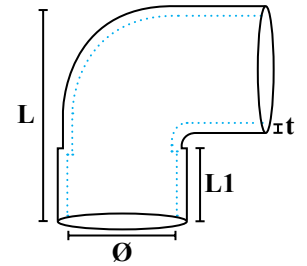
Reference	\varnothing (mm)	t(mm)	L(mm)	L1(mm)	Notes
B32ff	32	4	68	20	
B 1 ff	33,4	3	68	20	
B40ff	40	4	78	23	
B1 1/4ff	42,1	3	78	23	
B11/2ff	48	4	86	30	
B50ff	50	3	105	30	
B2ff	60	3	112	40	
B63ff	63	3	125	35	
B 3 ff	75	3	140	50	
B 4 ff	100	4	170	40	
B 5 ff	125	3	185	55	
B 6 ff	160	4	255	75	

**Swept Bend
90° FF**



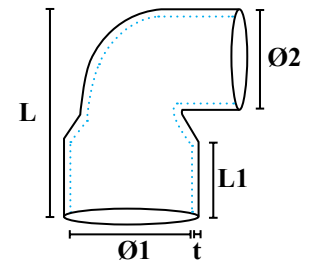
Reference	Ø(mm)	t(mm)	L(mm)	L1(mm)	Notes
BL 1 1/2ff	48	4	120	35	
BL2ff	60	3	140	40	

Bend 90° FM



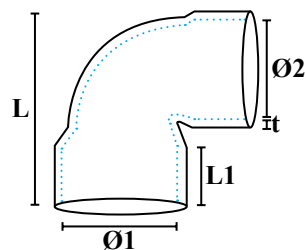
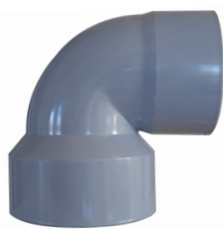
Reference	Ø(mm)	t(mm)	L(mm)	L1(mm)	Notes
B50fm	50	3	100	34	
B2fm	60	3	110	35	
B63fm	63	3	125	40	
B3fm	75	3	125	40	
B4fm	100	3	160	50	
B5fm	125	3	200	60	
B6fm	160	4	240	75	
B8fm	200	4	285	75	

**Bend Reducer
90° FF**



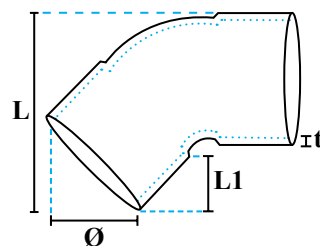
Reference	Ø1(mm)	Ø2(mm)	t(mm)	L(mm)	L1(mm)	Notes
BR2-1 1/4ff	60	42,1	3	100	35	

**Bend Reducer
90° FF**



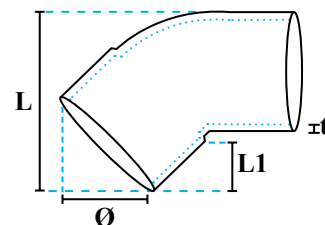
Reference	Ø1(mm)	Ø2(mm)	t(mm)	L(mm)	L1(mm)	Notes
BR5-4ff	125	100	4	175	55	

Bend 45° FF



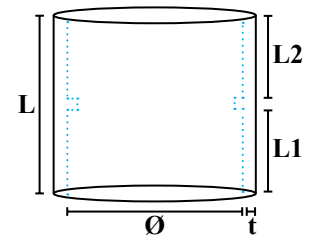
Reference	Ø(mm)	t(mm)	L(mm)	L1(mm)	Notes
BO1/2ff	21,1	2,5	50	26	
BO3/4ff	26,6	2,5	50	26	
BO50ff	50	3	85	35	

Bend 45° FM



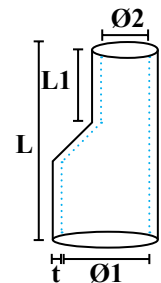
Reference	Ø(mm)	t(mm)	L(mm)	L1(mm)	Notes
BO1fm	33,4	3	55	30	
BO40fm	40	3	70	30	
BO1 1/4fm	42,1	3	70	30	
BO1 1/2fm	48	3	75	30	
BO50fm	50	3	85	35	
BO2fm	60	3	95	40	
BO63fm	63	3	110	40	
BO3fm	75	3	110	45	
BO4fm	100	3	150	55	
BO5fm	125	4	180	60	
BO6fm	160	4	220	70	
BO8fm	200	4	250	85	

Coupler



Reference	\varnothing (mm)	t(mm)	L(mm)	L1(mm)	L2(mm)	Notes
C16	16	3	55	25	25	
C20	20	3	57	26	26	
C1/2	21,1	3,5	45	19	19	
C25	25	3	60	27	27	
C3/4	26,6	3	48	22	22	
C32	32	3	60	27	27	
C1	33,4	3	58	25	25	
C40	40	3	70	33	33	
C1 1/4	42,1	3,5	55	25	25	
C1 1/2	48	3	58	25	25	
C50	50	3	58	25	25	
C2	60	2,7	72	35	35	
C63	63	3,5	72	35	35	
C3	75	3,5	85	40	40	
C4	100	3,5	89	42	42	
C5	125	3,5	120	58	58	
C6	160	3,5	120	58	58	
C8	200	4	160	75	75	

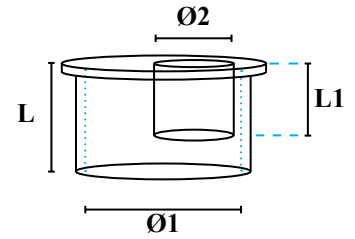
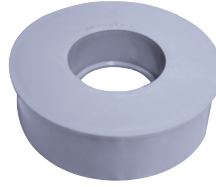
Invert Reducer



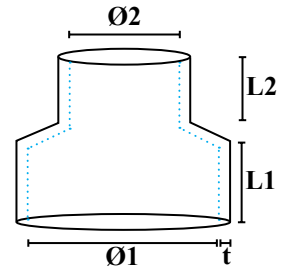
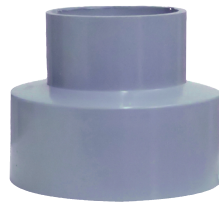
Reference	$\varnothing 1$ (mm)	$\varnothing 2$ (mm)	t(mm)	L(mm)	L1(mm)	Notes
IR	50	28	3	105	35	



Reducing Plug

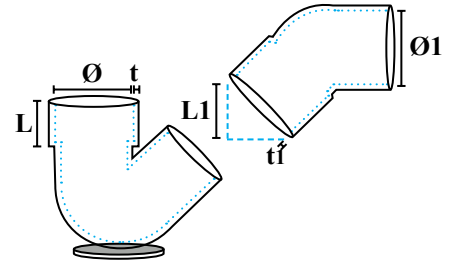


Reference	Ø1(mm)	Ø2(mm)	L(mm)	L1(mm)	Notes
RP3/4-50	50	26,6	37	25	
RP32-50	50	32	37	25	
RP1-50	50	33,1	37	25	
RP50-60	60	50	27	24	
RP32-75	75	32	53	30	
RP40-75	75	40	53	30	
RP50-75	75	50	43	30	
RP60-75	75	60	44	30	
RP60-100	100	60	48	27	
RP75-100	100	75	48	30	
RP50-110	110	50	55	33	
RP60-110	110	60	53	30	
RP63-110	110	63	53	30	
RP75-110	110	75	53	32	
RP100-110	110	100	63	55	
RP50-125	125	50	50	30	
RP60-125	125	60	53	31	
RP75-125	125	75	53	33	
RP100-125	125	100	51	41	
RP110-125	125	110	53	35	
RP75-160	160	75	55	35	
RP100-160	160	100	53	35	
RP110-160	160	110	53	37	
RP125-160	160	125	54	38	
RP160-200	200	160	70	58	
RP200-250	250	200	77	60	



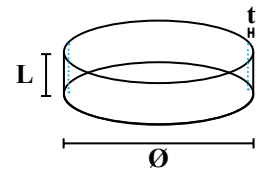
Reference	Ø1(mm)	Ø2(mm)	t(mm)	L1(mm)	L2(mm)	Notes
R1/2-3/4	26,6	21,1	2,2	18	18	
R3/4-1	33,4	26,6	2,5	18	24	
R3/4-1 1/4	42,1	26,6	3	18	19	
R3/4-1 1/2	48	26,6	3	23	30	
R3/4-2	60	26,6	3	27	30	
R32-40	40	32	2,2	20	23	
R32-50	50	32	2,5	18	25	
R32-63	63	32	2,5	18	23	
R1-1 1/4	42,1	33,4	3,2	20	25	
R1-1 1/2	48	33,4	4	30	38	
R1-50	50	33,4	2,5	18	25	
R1-2	60	33,4	3	25	23	
R40-50	50	40	2,5	19	24	
R40-63	63	40	3	19	23	
R1 1/4-1 1/2	48	42,1	4	35	38	
R1 1/4-2	60	42,1	3	28	30	
R1 1/2-2	60	48	2,5	29	30	
R50-60	60	50	3	25	30	
R50-63	63	50	3,2	24	30	
R2-3	75	60	3,5	30	44	
R2-4	100	60	3,5	35	44	
R3-4	100	75	4	40	53	
R3-5	125	75	3,5	45	50	
R4-5	125	100	3,5	50	50	
R4-6	160	100	4	45	55	
R5-6	160	125	4	50	60	
R6-8	200	160	4	68	65	

**Low Backed Gully
with Bend 45°**



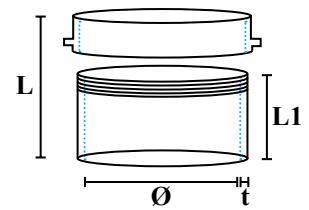
Reference	Ø(mm)	Ø1(mm)	t(mm)	t1(mm)	L(mm)	L1(mm)	Notes
GB3	75	75	3	3	30	45	
GB4	110	100	3	3	45	50	
GB110	110	110	3	3,5	45	70	

Simple Plug



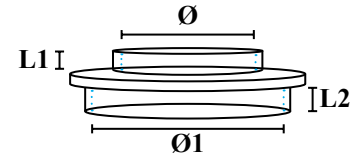
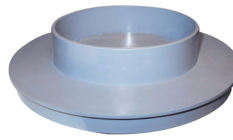
Reference	Ø(mm)	t(mm)	L(mm)	Notes
SP3	75	3	23	
SP4	100	3	23	
SP5	125	3	23	
SP6	160	3	23	
SP8	200	4	50	

Plug



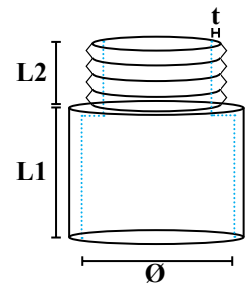
Reference	Ø(mm)	t(mm)	L(mm)	L1(mm)	Notes
P50	50	3,5	65	35	
P2	60	3	70	45	
P3	75	3	70	50	
P4	100	3	78	55	
P5	125	3,5	78	55	
P6	160	4	75	55	
P8	200	4	95	70	

Regular Plug



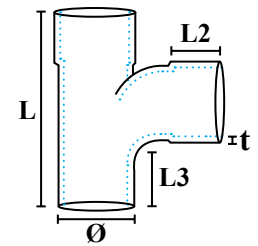
Reference	Ø(mm)	Ø1(mm)	L1(mm)	L2(mm)	Notes
PR5-4	100	125	30	13	
PR6-5	125	160	30	13	
PR8-4	100	200	30	13	
PR8-5	125	200	30	13	

Adaptor



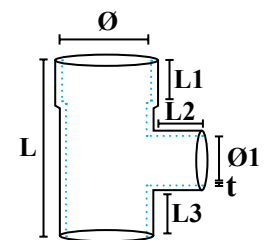
Reference	Ø(mm)	t(mm)	L1(mm)	L2(mm)	Notes
A1/2	21,1	2,5	29	17	
A3/4	26,6	3	30	23	
A1	33,4	4	27	23	
A1 1/4	42,1	4	30	29	
A1 1/2	48	4	40	20	
A2	60	4	45	25	

Technical Branch 90°



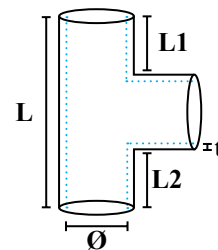
Reference	Ø(mm)	t(mm)	L(mm)	L2(mm)	L3(mm)	Notes
TB100	100	4	255	45	100	

Unequal Branch 90° FFM



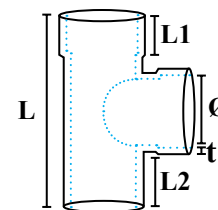
Reference	Ø(mm)	Ø2(mm)	t(mm)	L(mm)	L1(mm)	L2(mm)	L3(mm)	Notes
UTF3-2	75	60	3	165	40	40	40	
UTF4-2	100	60	3	175	50	35	50	

**Branch 90°
FFF**



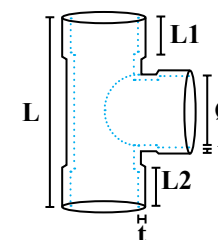
Reference	Ø(mm)	t(mm)	L(mm)	L1(mm)	L2(mm)	Notes
TF1/2	21,1	3	70	21	21	
TF3/4	26,6	3	80	25	25	
TF1	33,4	3	95	27	27	
TF1 1/4	42,1	3,5	97	24	24	
TF1 1/2	48	2,5	115	30	30	

**Branch 90°
FFM**



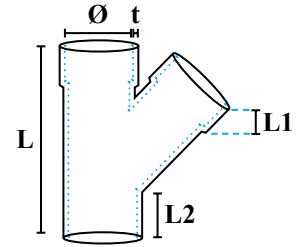
Reference	Ø(mm)	t(mm)	L(mm)	L1(mm)	L2(mm)	Notes
TF50	50	3	120	35	30	
TF2	60	3	175	35	45	
TF3	75	3	185	50	55	
TF4	100	3	220	55	55	
TF5	125	4	275	60	65	
TF6	160	4	340	75	85	
TF8	200	4,5	410	90	95	

**Branch 90°
FFF**



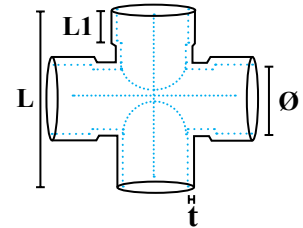
Reference	Ø(mm)	t(mm)	L(mm)	L1(mm)	L2(mm)	Notes
TF3F	75	3,5	165	40	40	

**Branch 45°
FFM**



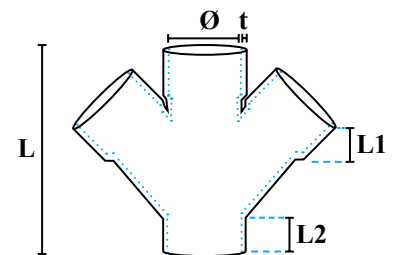
Reference	Ø(mm)	t(mm)	L(mm)	L1(mm)	L2(mm)	Notes
TY1 1/4	42	2,5	135	25	33	
TY1 1/2	48	2,5	140	25	35	
TY50	50	3	140	35	35	
TY2	60	3	170	40	35	
TY3	75	3	210	50	50	
TY4	100	4	250	50	55	
TY5	125	3,5	310	65	65	
TY6	160	4	390	70	70	

**Double Branch
90° FFFM**



Reference	Ø(mm)	t(mm)	L(mm)	L1(mm)	Notes
TC2	60	4	160	50	
TC3	75	3	185	50	
TC4	100	4	220	55	
TC5	125	4	240	55	

**Double Branch
45° FFFM**



Reference	Ø(mm)	t(mm)	L(mm)	L1(mm)	L2(mm)	Notes
TYY4	100	3	260	50	55	

Floor Trap



<i>Reference</i>	<i>Ø IN(mm)</i>	<i>Ø OUT(mm)</i>	<i>Notes</i>
PAR4-2	100	60	
PAR4-3	110	75	

Floor Trap



<i>Reference</i>	<i>Ø IN(mm)</i>	<i>Ø OUT(mm)</i>	<i>Notes</i>
PAR5-2	125	60	
PAR5-3	125	75	

Floor Trap With Band



<i>Reference</i>	<i>Ø IN(mm)</i>	<i>Ø OUT(mm)</i>	<i>Notes</i>
PAR4-2-50	100	60/50	
PAR5-3-63	125	75/63	

Low Floor Trap



<i>Reference</i>	<i>Ø IN(mm)</i>	<i>Ø OUT(mm)</i>	<i>Notes</i>
PAR5-50E	125	50	
PAR5-2E	125	60	
PAR5-3E	125	75	

Trapped Floor Gully With Bend

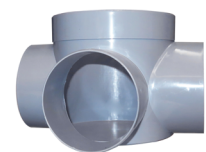


Reference	Ø IN(mm)	Ø OUT(mm)	Notes
REG5-2	125/60/60/60	60	
REG5-3-2	125/60/60/60	75/63	
REG125-75-50 (small)	125/50/50/50	75	
REG125-75-50 (big)	125/50/50/50	75/63	

Trapped Floor Gully



A



B

Reference	Ø IN(mm)	Ø OUT(mm)	Notes
A			
REG8-4	200/100/100/100	100	
B			
REG160-110	160/110/75	110	

Floor Trap



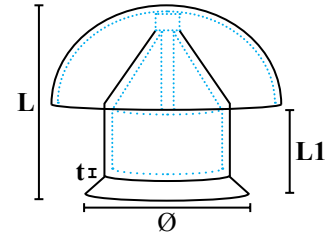
Reference	Ø OUT(mm)	Notes
FT2	60	

Floor Trap



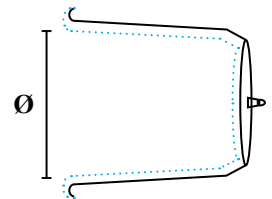
Reference	Ø OUT(mm)	Notes
FT110	100/110	

Roof Ventilation cap



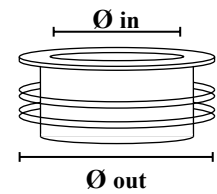
Reference	Ø(mm)	t(mm)	L(mm)	L1(mm)	Notes
RV4	100	3	110	50	

PE Plug



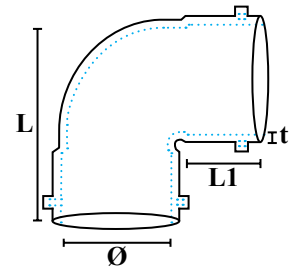
Reference	Ø(mm)	Notes
TEL50	50	
TEL4	100	

Rubber Seal

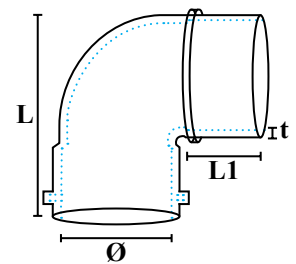


Reference	Ø out(mm)	Ø in(mm)	Notes
RS1 1/4-1	42	33,4	
RS1 1/2-1	48	33,4	
RS50-3/4	50	26,6	
RS50-1	50	33,4	
RS50-1 1/4	50	42	
RS2-1	60	33,4	
RS2-1 1/4	60	42	
RS2-1 1/2	60	48	

Sewer Fittings

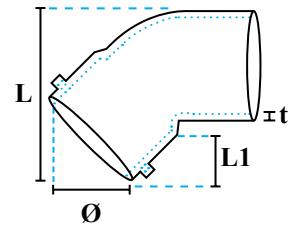


Reference	\emptyset (mm)	t(mm)	L(mm)	L1(mm)	Notes
BR75ff	75	3	135	45	
BR110ff	110	3	180	55	
BR125ff	125	3	185	55	



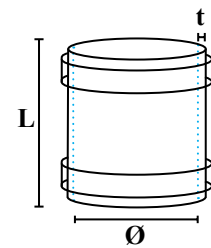
Reference	\emptyset (mm)	t(mm)	L(mm)	L1(mm)	Notes
BR75fm	75	3	130	40	
BR110fm	110	3	180	55	
BR125fm	125	3	190	60	
BR160fm	160	4	250	75	
BR200fm	200	4,5	275	75	

Bend 45° FM



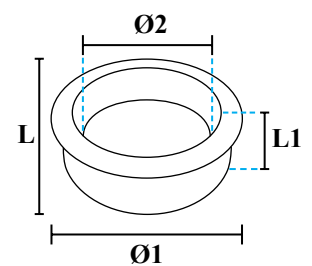
Reference	Ø(mm)	t(mm)	L(mm)	L1(mm)	Notes
BOR75fm	75	3	120	40	
BOR110fm	110	3,5	160	50	
BOR125fm	125	4	185	55	
BOR160fm	160	4	225	70	
BOR200fm	200	4,5	255	80	

Coupler



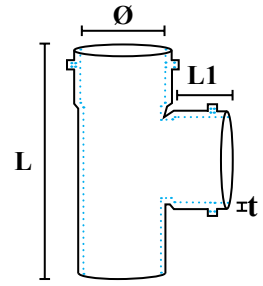
Reference	Ø(mm)	t(mm)	L(mm)	Notes
CR75	75	3	95	
CR110	110	3,5	125	
CR125	125	4	115	
CR160	160	4	150	
CR200	200	4	155	

Reducing Plug



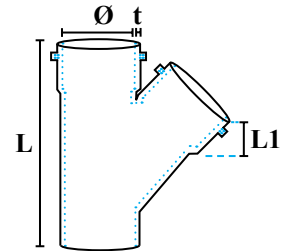
Reference	Ø1(mm)	Ø2(mm)	L(mm)	L1(mm)	Notes
RPR75-110	110	75	53	36	
RPR75-125	125	75	53	36	
RPR75-160	160	75	54	42	
RPR110-125	125	110	53	39	
RPR110-160	160	110	54	42	
RPR125-160	160	125	54	42	
RPR160-200	200	160	70	58	
RPR200-250	250	200	77	60	

**Branch 90°
FFM**



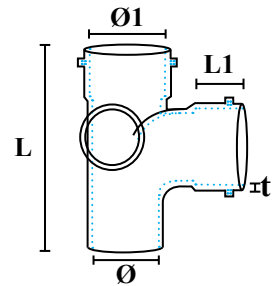
Reference	Ø(mm)	t(mm)	L(mm)	L1(mm)	Notes
TFR75	75	3	180	45	
TFR110	110	4	275	60	
TFR125	125	4	270	60	
TFR160	160	4	340	75	
TFR200	200	4	405	85	

**Branch 45°
FFM**



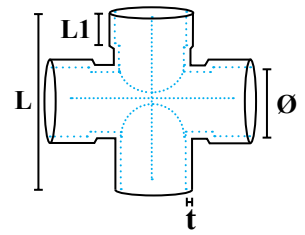
Reference	Ø(mm)	t(mm)	L(mm)	L1(mm)	Notes
TYR75	75	3	205	50	
TYR110	110	4	275	50	
TYR125	125	4	305	60	
TYR160	160	4	385	70	

**Technical
Branch 90°**



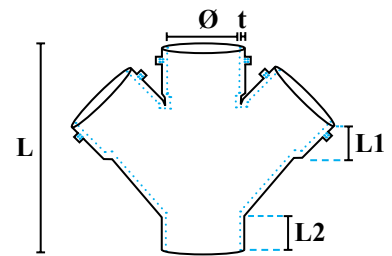
Reference	Ø(mm)	Ø1(mm)	L(mm)	L1(mm)	Notes
TBR110	110	75	300	60	

Double Branch 90°



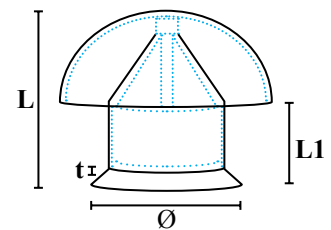
Reference	Ø(mm)	t(mm)	L(mm)	L1(mm)	Notes
RTC75	75	3	185	50	
RTC110	110	3,5	260	60	
RTC125	125	3,5	240	55	

Double Branch 45°



Reference	Ø(mm)	t(mm)	L(mm)	L1(mm)	L2(mm)	Notes
TYR110	110	4	325	75	80	

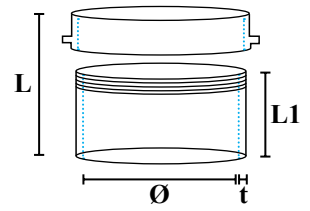
Roof Ventilation Cap



Reference	Ø(mm)	t(mm)	L(mm)	L1(mm)	Notes
RVR110SC	110	3	100	55	



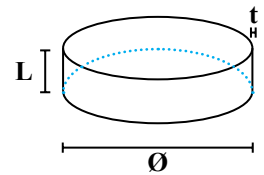
Plug



Reference	\varnothing (mm)	t(mm)	L(mm)	L1(mm)	Notes
PR75	75	3	70	50	
PR110	110	3	65	45	
PR125	125	3,5	78	58	
PR160	160	4	78	55	
PR200	200	4	90	70	



Simple Plug



Reference	\varnothing (mm)	t(mm)	L(mm)	Notes
SPR75	75	3	23	
SPR110	110	3	23	
SPR125	125	3	23	
SPR160	160	3	23	
SPR200	200	4	50	